

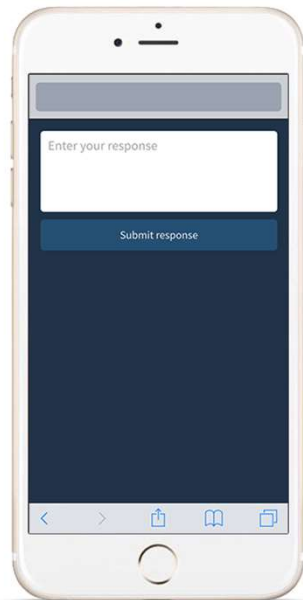


SAN DIEGO
MAY 21-24

Move Beyond Accessibility with Universal Design for Learning

Responding with Poll Everywhere

On your phone or web browser, please go to pollev.com/kitac648 or scan the QR code.



My Story



TD Geek

Neurodivergent

Person with Disabilities

Language Learner

PICTURE THIS

- What would be different about this session if this situation applied to you?
- What learning barriers would you encounter, if any?
- What accessibility tools could you use to help you learn?



UNIVERSAL DESIGN



Universal Design
=
Inclusive Design



Curb Cut Effect



Everyone Benefits

UNIVERSAL DESIGN FOR LEARNING

Learner Diversity

Sensory



Mobility



Non-Apparent



Low Literacy



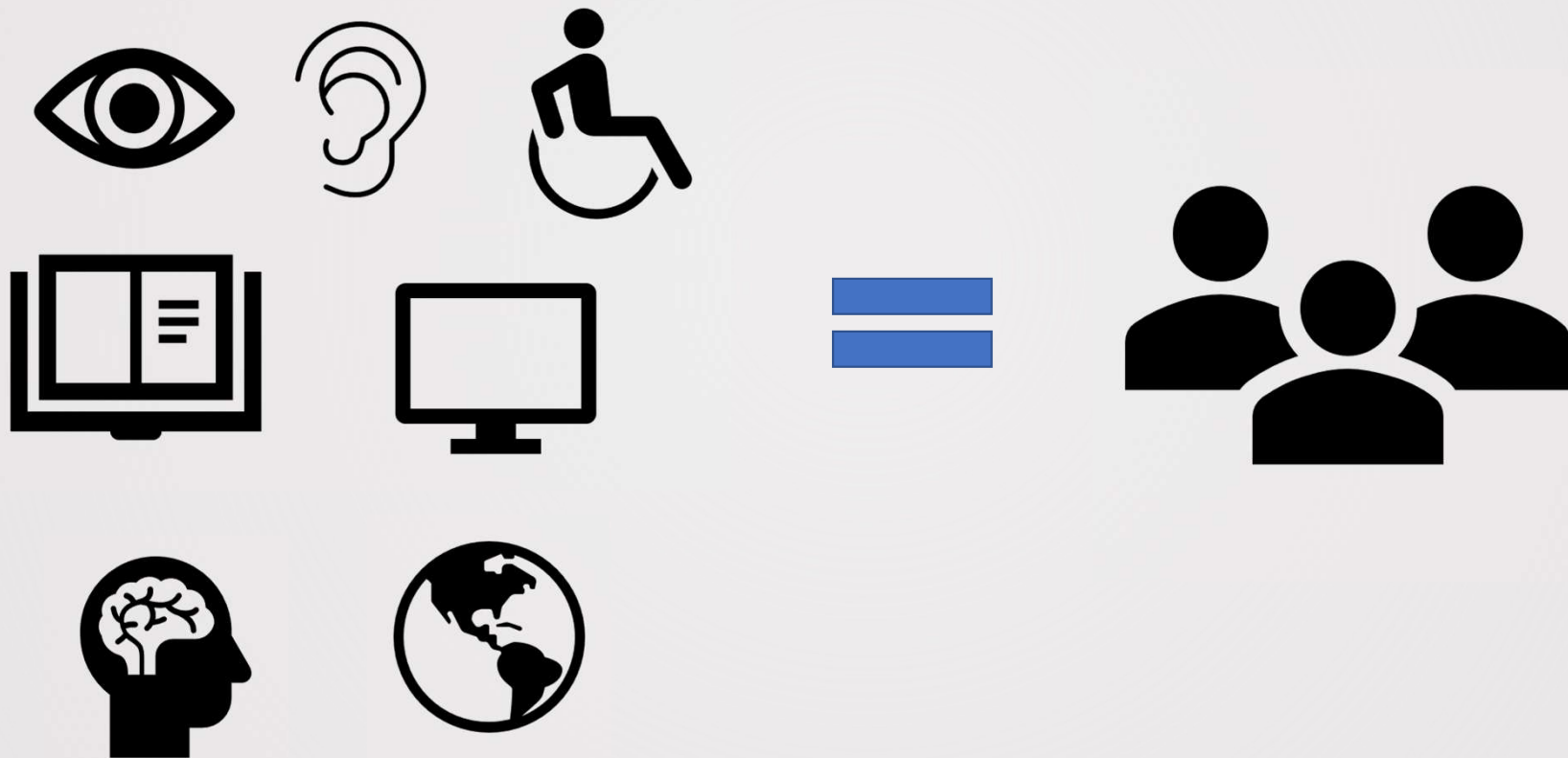
Digital Literacy



Language/Culture



UDL Framework



Benefits to Learners

- Greater access to presentation content
- Greater opportunities for achievement
- Greater satisfaction with the learning process





Benefits for Talent Development

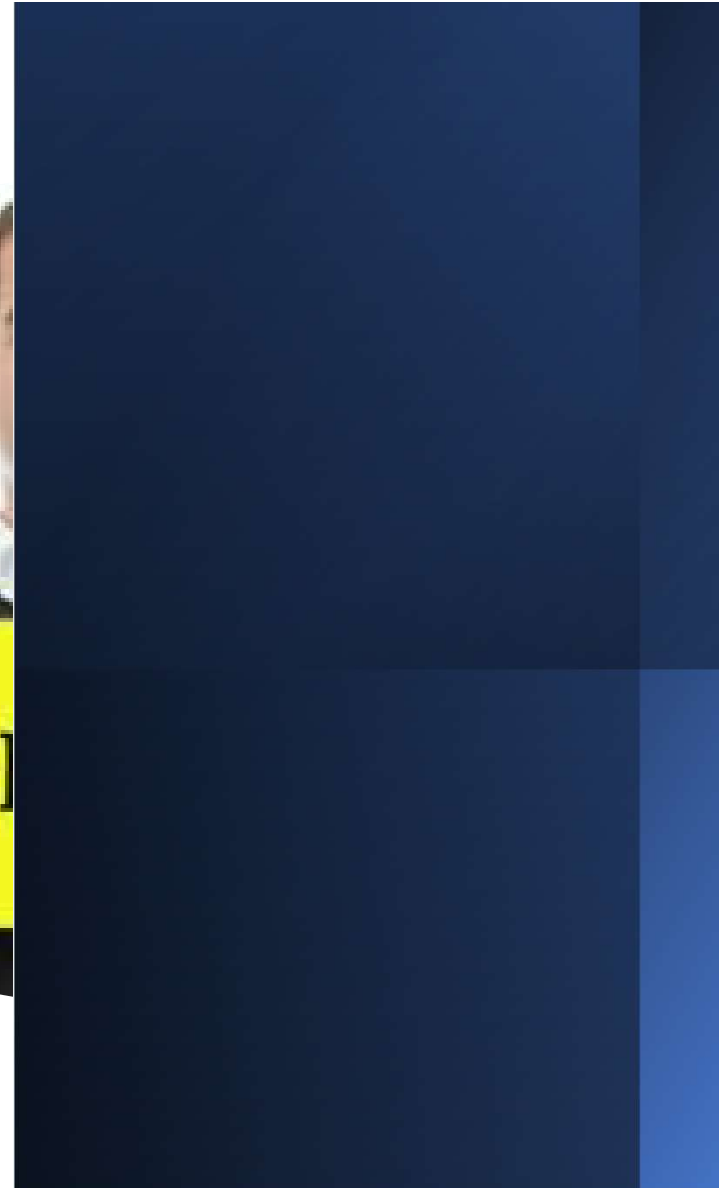
- Ability to reach a diverse population without needing to make accommodations in the future
- Tools to consider how and what to present in a systematic and structured manner



Start with UDL and Accessibility in Mind

Multiple Means of Engagement

The WHY of Learning



Multiple Means of Representation

The WHAT of Learning



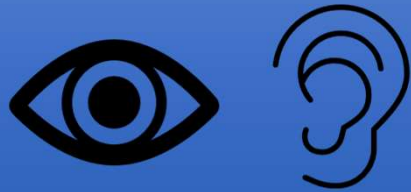


Multiple Means of Action and Expression
The HOW of Learning

APPLYING UDL AND ACCESSIBILITY TO TRAINING

Considerations for Learner Diversity

Sensory



Mobility



Non-Apparent



Low Literacy



Digital Literacy



Language/Culture



Considerations for Vision

Sensory



Optimized Seating

Large Text and Images

High Contrast Colors

Text or Symbols

Use Sans Serif Fonts

24-28 point font

Proper Lighting

Describe slides/images

Considerations for Hearing

Sensory



Optimized Seating

Use Visuals

Face Front of the Audience

Appropriate Volume

Closed or Open Captioning

Provide Transcripts

Proper Acoustics

Microphone and Speakers

Considerations for Mobility

Mobility



Optimized Seating

Easy to Navigate Classroom

Accommodation Unique to Each Individual

Ask What They Need

Considerations for Non-Apparent Disabilities

Non-Apparent



Simplified Instructions

Easy to Navigate

Easy to Understand

Predictable

Sans Serif Font, i.e. Arial

Multiple Presentation Formats

Record Training

Considerations for Low Literacy

Low Literacy



Simplified Instructions

Use Visuals

Use Peer Language

Use Familiar Words

Interactive Format

Limit Content Material

Concrete Examples

Record Training

Considerations for Digital Literacy

Digital Literacy



Print Hard Copies

Blended Learning

Offer Digital Tutorials

Simple Instructions

Provide “How-To” Job Aids

Considerations for Language Learners

Language/Culture



Use Images

Appropriate Reading Level

Hands-On Experiences

Real-World Application

Record Training

Use Translator Tools



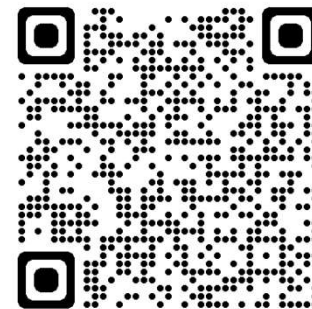
UJDL in a Virtual World



Gwen Navarrete Klapperich, CPTD
gwen@kitaconsultingservices.com



[Accessibility and UDL | KITA Consulting](https://www.kitaconsultingservices.com/Accessibility-and-UDL)



[LinkedIn](#)

FEEDBACK COUNTS

Your feedback helps ATD continue to provide top-notch educational programs that help you stay on top of a changing profession.

The evaluation form for this session is available via the mobile app, QR code and at the following link:
[atdconference.org/attendees.](https://atdconference.org/attendees)

